

MODEL "LPB"

Medium Duty Slider Bed Conveyor



- Packing
- Inspecting
- Sorting
- Assembly
- Testing
- Transporting

STANDARD SPECIFICATIONS

Belt - 8", 12", 18", 20", 24" and 30" Black PVC 120 belt.

Bed - 12 gauge painted formed steel, 4" deep. Bed sections are 5 feet and 10 feet long bolted together with splice plates and floor supports.

Tail Pulley - 4" diameter crowned with 1³/₁₆" diameter shaft.

Drive Pulley - 4" diameter and 8" diameter crowned and fully lagged. 4" diameter pulley with 1³/₁₆" diameter shaft, 8" diameter pulley with 1⁷/₁₆" diameter shaft.

Snub-Roller - 2" diameter for 4" diameter pulley, 2¹/₂" diameter for 8" diameter pulley.

Return Roller - 1.9" diameter adjustable on 10'0" centers.

Floor Supports - Adjustable 28¹/₂" to 42¹/₂" from floor to top of belt. One support supplied at each end of conveyor and at each bed joint.

Take-Up - 6" long screws located at tail pulley to provide belt tension.

Bearings - Sealed-prelubricated with cast iron housings.

Speed Reducer - C-Face mounted heavy duty worm gear reducer.

Motor - 1/2 HP 230/460-3-60 TE motor.

Belt Speed - 60 FPM constant.

Capacity - Maximum load per lineal foot of conveyor - 75 lbs. Not to exceed Load Capacity Chart.

OPTIONAL EQUIPMENT

Belt - Nitrile (white or black) with smooth top cover, Black PVC rough top, Brown Nitrile rough top. Special belts on application.

Side Tables - 10", 16" or 22" wide formed steel side tables provide 12", 18" or 24" work area. Tables are supported by angles bolted to bed section.

Guard Rails - Adjustable channel, continuous channel, or solid steel guard rails available.

Floor Supports - Lower or higher than standard. Castored supports with 4" diameter or 6" diameter rigid or swivel casters.

Ceiling Hangers - 1/2" diameter threaded rods 8 feet long with locking nuts and mounting hardware. Other lengths are available.

Gravity Conveyor Brackets - Adjustable bracket with 1³/₈" diameter pop-out roller for attaching wheel or roller conveyor.

Nose-Over - Adjustable single or double nose-over provides smooth transfer from incline to horizontal. See drawing on page 96 for details.

Center Drive - Mounted below conveyor bed section. Can be placed most anywhere in conveyor length.

Side Mounted Drive - End drive mounted to side of conveyor section. Specify side. Minimum 6" elevation with 4" drive pulley, minimum 9" elevation with 8" drive pulley.

Overhead Drive - End drive mounted above conveyor. Specify clearance required.

Auxiliary Take-Up - Mounted below conveyor bed section. Can be placed anywhere in conveyor length.

Motor - Single phase, energy efficient, explosion proof, etc. Other HP available.

Belt Speed - Constant and variable belt speeds available.

Electrical Controls - Magnetic starters and push button stations; Manual motor starters with overload protection, others.

MODEL "LPB"

Bed Length	Overall Length	Diameter Drive Pulley	Belt Width	8"	12"	18"	20"	24"	30"
			Bed Width	12"	16"	22"	24"	28"	34"
			Bed	12 Gauge Formed Steel Bed					
5'	5'10"	4"	Weight (lbs.)	252	272	315	343	366	389
10'	10'10"	4"		286	314	382	397	422	447
15'	15'10"	4"		343	380	475	494	528	562
20'	20'10"	4"		377	422	542	565	607	649
25'	25'10"	4"		434	488	635	662	713	764
30'	30'10"	4"		468	530	702	733	792	851
35'	35'10"	4"		525	596	795	830	898	966
40'	40'10"	4"		559	638	862	901	977	1053
45'	45'10"	4"		616	704	955	998	1083	1168
50'	50'10"	4"		655	753	1032	1081	1176	1271
55'	56' 2"	8"	Weight (lbs.)	712	819	1125	1178	1282	1386
60'	61' 2"	8"		746	861	1192	1249	1351	1453
65'	66' 2"	8"		803	927	1285	1346	1457	1568
70'	71' 2"	8"		839	971	1364	1420	1549	1678
75'	76' 2"	8"		896	1037	1457	1517	1655	1793
80'	81' 2"	8"		930	1079	1514	1588	1734	1880
85'	86' 2"	8"		987	1145	1607	1685	1840	1995
90'	91' 2"	8"		1021	1187	1673	1756	1920	2084
95'	96' 2"	8"		1078	1253	1766	1853	2026	2199
100'	101' 2"	8"		1112	1295	1833	1924	2105	2286

Minimum OAL	4" Drive	8" Drive
End Drive	3'6"	4'0"
End Side Mount	2'6"	3'0"
Center Drive	5'6"	6'6"
Auxiliary Take-up with End Drive	7'0"	7'6"
Auxiliary Take-up with Side Mount	6'0"	6'6"

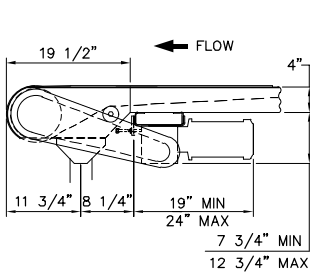
Load Capacity Chart

60 FPM	
HP	TOTAL LOAD
1/2	435 lbs.
3/4	650 lbs.
1	810 lbs.

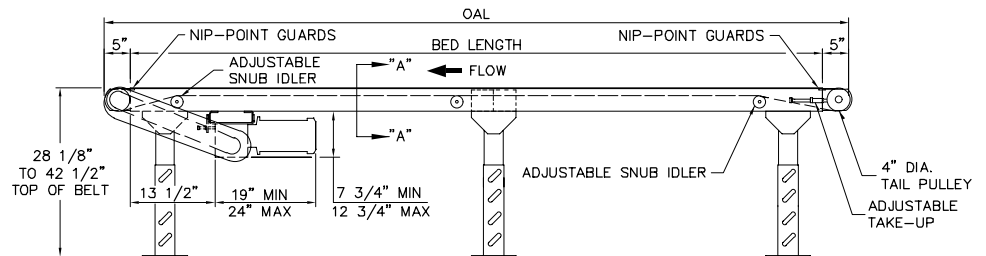
NOTE: 1 HP Max. for this model



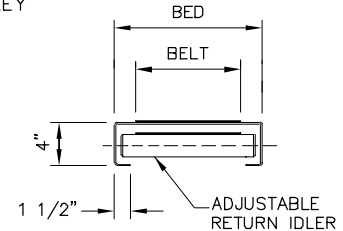
8" DIAMETER END DRIVE



8" DRIVE PULLEY



4" DRIVE PULLEY



VIEW A-A