

MODELS "138 CLRS" and "138 CLRSS" V-Belt Spur



- Used for merging or diverging
- Gives positive drive
- Can be slave driven by "138 CAP"

STANDARD SPECIFICATIONS

Driving Belt - "B" section V-belt.

Bed - Roller bed width between frames, 10", 13", 16" and 22". 5 $\frac{1}{2}$ " x 1 $\frac{1}{2}$ " x 12 gauge painted formed steel channel frame.

Tread Rollers - 1 $\frac{3}{8}$ " diameter x 18 gauge galvanized steel tread rollers, 1 $\frac{1}{2}$ " centers, $\frac{5}{16}$ " hex shaft for 13" to 19" OAW. 2 $\frac{1}{2}$ " to 1 $\frac{11}{16}$ " tapered roller for 25" OAW conveyor, $\frac{7}{16}$ " hex shaft.

Pressure Sheaves - 3" diameter x $\frac{3}{8}$ " bore, adjustable to give required driving force.

Floor Supports - One support adjustable 30" to 44" from floor to top of rollers. Center leg on outer rail of "138 CLRS".

Tangent - 12" long, on one end of curved spur.

Take-Up - Screw take-up provided to insure proper V-belt tension. Mounted in conveyor frame.

End Drive - Mounted below bed section.

Bearings - Sealed prelubricated with cast iron housings.

Speed Reducer - C-Face mounted heavy duty worm gear reducer.

Motor - $\frac{1}{2}$ HP 230/460-3-60 TE motor.

Conveying Speed - 60 FPM constant.

Capacity - 300 lbs. total distributed live load.

OPTIONAL EQUIPMENT

Guard Rails - Adjustable channel, continuous channel, or solid steel guard rails available.

Floor Supports - Lower or higher supports are available. Minimum elevation 15 $\frac{1}{2}$ ".

Ceiling Hangers - $\frac{1}{2}$ " diameter threaded rods 8 feet long with locking nuts and mounting hardware. Other lengths are available.

Side Mounted Drive - End drive mounted to side of conveyor bed section. Minimum elevation 8". Specify side.

Motor - Single phase, energy efficient, explosion proof, etc. Other HP available.

Conveying Speed - Variable and other constant speeds available.

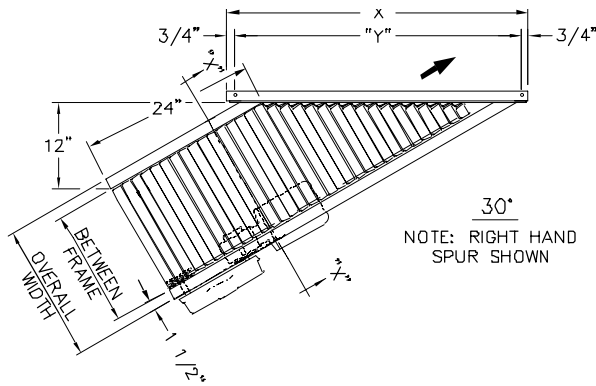
Electrical Controls - Magnetic starters and push button stations; Manual motor starters with overload protection, others.

MODELS "138 CLRS" and "138 CLRSS"

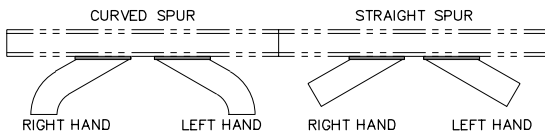
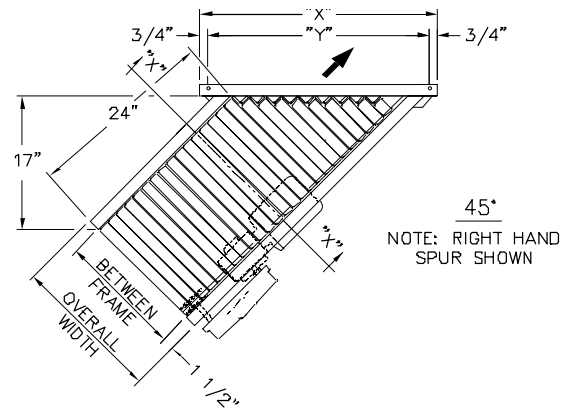
CURVE SPUR "138 CLRS"									
Overall Width	Width Between Frame	Radius	A		B		Weight (lbs.)		
			45°	30°	45°	30°	45°	30°	
13"	10"		45 1/4"	48 3/8"	34 3/8"	49 3/8"	130	140	
16"	13"	25"	47 1/4"	51"	39 1/2"	57"	135	145	
19"	16"		49 1/2"	53 1/2"	44 5/8"	64 1/2"	140	150	
25"	22"	32 1/2"	59"	65 1/4"	57"	83"	145	155	

STRAIGHT SPUR "138 CLRSS"							
Overall Width	Width Between Frame	X		Y		Weight (lbs.)	
		45°	30°	45°	30°	45°	30°
13"	10"	21 1/2"	29"	20"	27 1/2"	160	185
16"	13"	25 1/2"	35"	24"	33 1/2"	165	190
19"	16"	30"	41"	28 1/2"	39 1/2"	170	195
25"	22"	38 1/2"	53"	37"	51 1/2"	175	200

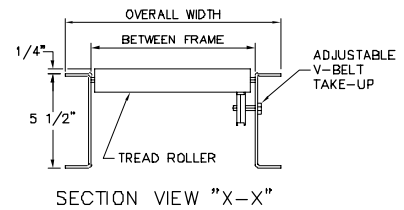
"138 CLRSS" STRAIGHT SPUR - 30°



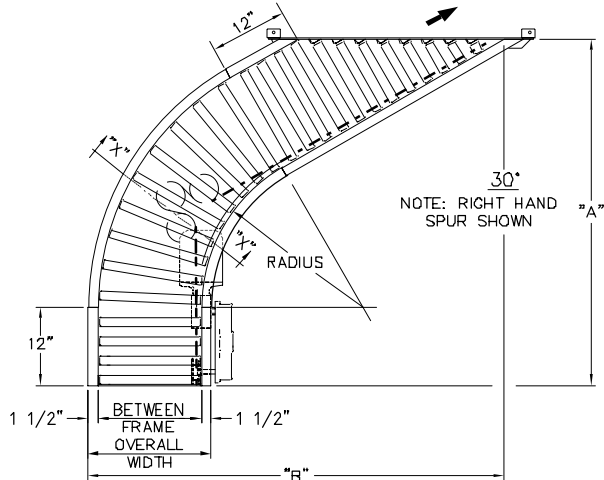
"138 CLRSS" STRAIGHT SPUR - 45°



- Specify "right" or "left" hand unit.
- Specify direction of flow.
- Specify conveyor to be attached to in order for proper attachment bracket to be furnished.



"138 CLRS" CURVE SPUR - 30°



"138 CLRS" CURVE SPUR - 45°

