

MODEL "350CRR"

Heavy Duty Chain Driven Live Roller Conveyor



- Heavy duty conveying
- Positive drive
- Pallets
- Heavy drums
- Reversible drums

STANDARD SPECIFICATIONS

Bed - Conveying surface width 19", 27", 29", 33", 41", 47", 53" and 55". 6" x 8.2 lb. and 8" x 11.5 lb. structural channel frame with structural angle cross braces in each section. Sections are 5 feet long and bolted together with butt couplings and floor supports.

Tread Rollers - 3½" diameter x .30 wall steel tread rollers spaced on 6", 7½", 10" and 12" centers with No. 80 sprockets, 1½" hex shaft.

Drive Chain - No. 80 roller chain for straight sections; No. 80 circular roller chain for curve sections.

Floor Supports - Heavy duty structural supports are fixed at 18" elevation from floor to top of roller. One support at each end of conveyor and at each bed joint.

Center Drive - Mounted below conveyor bed section. Can be placed most anywhere in conveyor length.

Bearings - Removable, sealed, prelubricated ball bearings.

Chain Guard - Lower chain guard is mounted on bottom of roller frame, and upper chain guard is mounted above roller frame to totally enclose drive chain.

Speed Reducer - C-Face mounted heavy duty worm gear reducer.

Motor - 2 HP 230/460-3-60 TE motor.

Capacity - 2000 lbs. per foot maximum. Not to exceed Load Capacity Chart.

Speed - 30 FPM constant.

OPTIONAL EQUIPMENT

Floor Supports - Lower or higher supports are available.

Side Mounted Drive - Center drive mounted to side of conveyor frame. Drive is higher than conveyor frame. Minimum elevation to top of rollers is 10¾". Specify which side.

Rollers Set Low - Tread rollers set low in 8" x 8.5 pound structural steel channel frame to form 5/8" high guards.

Motor - Single phase, energy efficient, explosion proof, etc. Other HP available.

Electrical Controls - Magnetic starter and push button stations. Manual motor starters with overload protection, others.

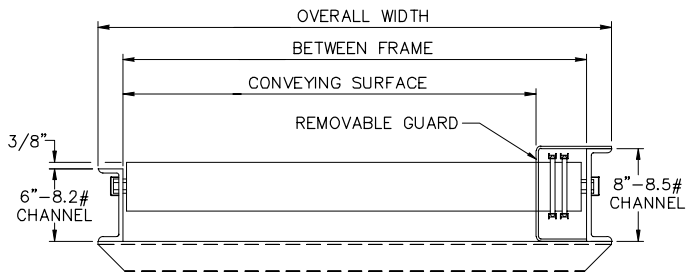
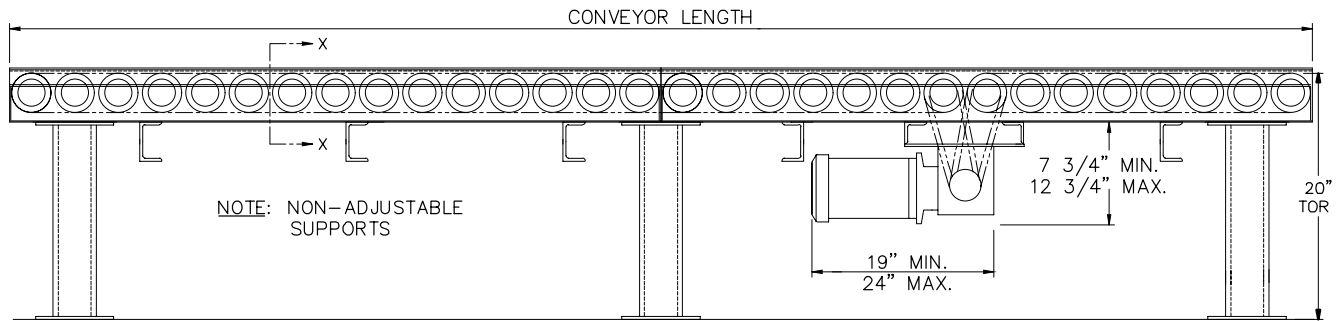
Speed - Constant and variable speeds available.

MODEL "350CRR"

Conveyor Length	Conveying Surface	19"	27"	29"	33"	41"	47"	53"	55"
	Between Rail Width	23"	31"	33"	37"	45"	51"	57"	59"
	Overall Frame Width	27"	35"	37"	41"	49"	55"	61"	63"
5'	WEIGHTS (Lbs.) Weights Based on 6" Roller Centers	792	900	927	981	1089	1170	1251	1278
10'		1284	1490	1541	1644	1849	2003	2157	2208
15'		1776	2079	2155	2306	2609	2836	3063	3138
20'		2268	2668	2768	2968	3368	3668	3968	4068
25'		2760	3258	3382	3631	4128	4501	4873	4998
30'		3252	3863	4015	4320	4931	5388	5846	5998
40'		4236	5026	5223	5617	6407	6999	7590	7788
50'		5220	6204	6450	6942	7926	8664	9402	9648
60'		6204	7383	7678	8267	9446	10330	11214	11508
70'		7188	8562	8905	9592	10965	11995	13025	13368
80'		8172	9740	10132	10916	12484	13660	14836	15228
90'		9156	10918	11360	12241	14004	15236	16648	17088
100'		10140	12096	12588	13566	15524	16812	18460	18948

Load Capacity Chart

HORIZONTAL CONVEYOR ROLLER BED @ 30 FPM									
HP	27" - 38" OAW			40" - 52" OAW			58" - 66" OAW		
	TOTAL LOAD			TOTAL LOAD			TOTAL LOAD		
	30'	60'	90'	30'	60'	90'	30'	60'	90'
2	21000	19200	17400	20400	18000	15600	19400	16000	12500
3	27000	25200	23400	26400	24000	21600	25400	22000	18500



SECTION VIEW "X-X"