

MODEL "FTC"

Inclined Floor-to-Floor Conveyor



- **Booster conveyor for gravity flow systems**
- **Transporting between floors**
- **Center drive**

STANDARD SPECIFICATIONS

Belt - 14", 18", 24", 30" and 36" wide ruff-top belt.

Bed - 20", 24", 30", 30", 36" and 42" wide 12 gauge painted formed steel slider bed. Bed is 6½" deep x 6 feet, 8 feet or 10 feet long spliced together with splice plates.

Under-Trussed Bed - Extra reinforcement to prevent sag in longer bed sections in addition to reinforcing angles, 24 feet and longer.

Double Nose-Over - Two 16" long adjustable bed sections provide a two step transition from incline to horizontal with 15° to 35° adjustment.

Tail Pulley - 4" diameter, crowned with 1¾" diameter shaft through 30" wide belt. 6" diameter tail pulley with 1⅞" diameter shaft turned down on ends for wider than 30" belt.

Drive Pulley - 8" diameter crowned and lagged. 1⅞" diameter.

Snub Roller - 2½" diameter at drive pulley and 2" diameter at tail pulley.

Return Idlers - 1.9" diameter, adjustable.

Take-Up - Located in center drive assembly, provides 24" of belt take-up.

Pop-Out Roller - Free floating, 1⅜" diameter rollers located at tail pulleys with gravity connector rods. Will lift out if anything is caught between pulleys and rollers.

Floor Supports - Adjustable stands to give 31" to 45" height at each end; with knee braces.

Bearings - Sealed prelubricated with cast iron housings.

Speed Reducer - C-Face mounted heavy duty worm gear reducer.

Motor - ¾ HP 230/460-3-60 TE motor.

Belt Speed - 60 FPM constant.

Capacity - 100 lbs. per foot maximum. Not to exceed Load Capacity Chart.

OPTIONAL EQUIPMENT

Belt - Neoprene ruff-top, PVC ruff-top, other types and styles.

Guard Rails - Adjustable channel, continuous channel, or solid steel guard rails available.

Ceiling Hangers - ½" diameter threaded rods of 8 feet long with locking nuts and mounting hardware. Other lengths are available.

Floor Stands - Lower or higher than standard.

Lower Powered Feeder Section - Separate belt section with (2) supports, adjustable from 28½" to 42½". Driven by roller chain from tail pulley of inclined section. Integral feeder available.

Single Nose-Over - A straight section 23½" from tail pulley to center of nose-over roller provides for smooth transition from 0° to 15° incline.

Motor - Single phase, energy efficient, explosion proof, etc. Other HP available.

Belt Speed - Constant and variable belt speeds available.

Electrical Controls - Magnetic starters and push button stations; manual motor starters with overload protection, others.

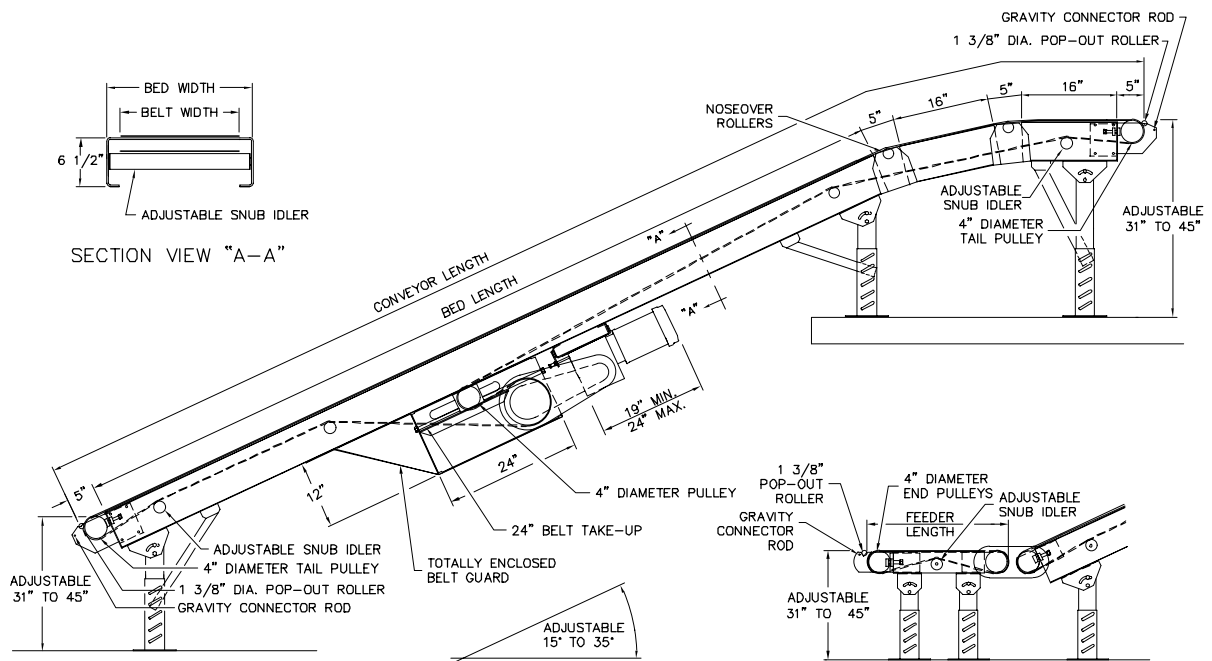
MODEL "FTC"

Overall Length	Bed Length	Net Lift 25°	Horizontal Floor Space @ 25°	Belt Width / Bed Width			
				14"	18"	24"	30"
14'4"	10'	4'8"	13'2"	20"	24"	30"	36"
18'4"	14'	6'4"	16'10"	650	720	825	925
20'4"	16'	7'2"	18'7"	730	815	935	1050
22'4"	18'	8'0"	20'5"	760	850	980	1100
24'4"	20'	8'10"	22'3"	800	895	1030	1165
26'4"	22'	9'8"	24'1"	825	930	1070	1210
28'4"	24'	10'7"	25'10"	970	1085	1240	1390
30'4"	26'	11'5"	27'8"	1005	1125	1295	1460
32'4"	28'	12'3"	29'6"	1040	1160	1330	1500
34'4"	30'	13'1"	31'4"	1070	1200	1380	1560
36'4"	32'	13'11"	33'1"	1110	1240	1430	1610
38'4"	34'	14'9"	34'11"	1190	1330	1530	1720
40'4"	36'	15'7"	36'9"	1220	1370	1580	1780
42'4"	38'	16'6"	38'7"	1250	1410	1620	1830
44'4"	40'	17'4"	40'4"	1290	1450	1670	1890
				1320	1490	1715	1940

Load Capacity Chart

60 FPM	
HP	TOTAL LOAD
3/4	430 lbs.
1	540 lbs.
1 1/2	810 lbs.
2	1080 lbs.

POWER FEEDER - OPTIONAL



OPTIONAL POWERED FEEDER BED