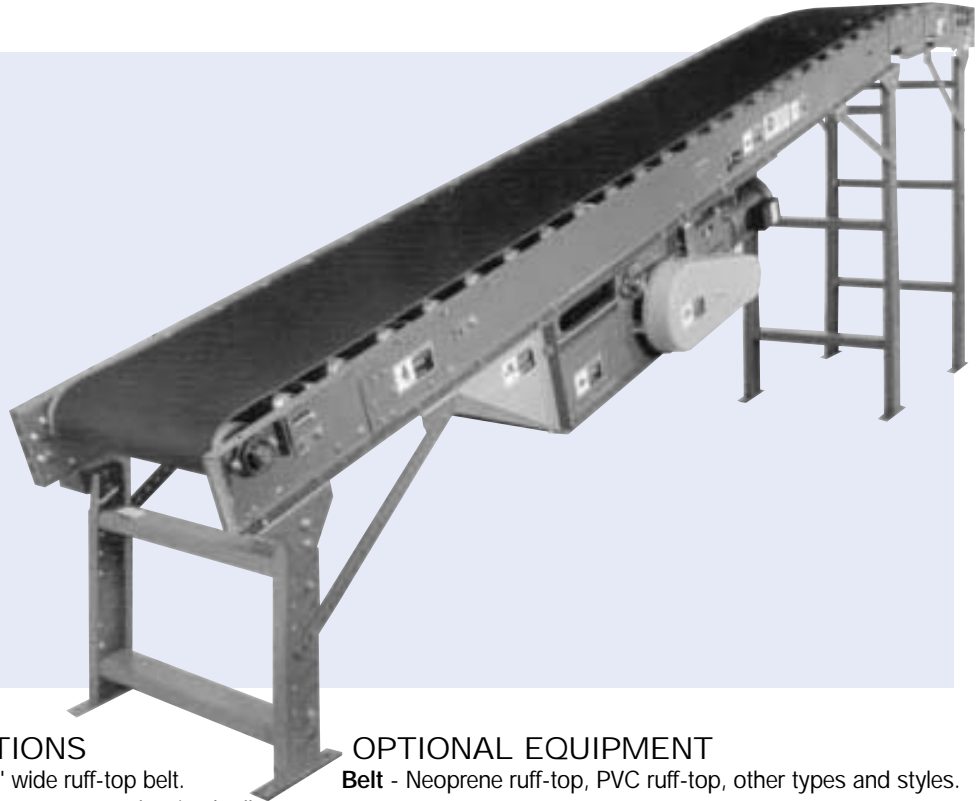


MODEL "190RBI"

Incline Roller Bed Conveyor

- Transporting between floors
- Booster conveyor for gravity flow systems
- Heavier loads can be conveyed because of less friction build-up



STANDARD SPECIFICATIONS

Belt - 12", 16", 18", 20", 24" and 30" wide ruff-top belt.

Bed - Roller bed with 1.9" diameter x 16 gauge galvanized rollers spaced on 6" centers. Rollers mounted in 7" x 1 1/2" x 12 gauge painted formed steel channel frames. Frames bolted together with butt couplings.

Under-Trussed Bed - Extra reinforcement to prevent sag in longer bed sections in addition to reinforcing angles, 20 feet and longer.

X-Bracing - Supplied on conveyors 40 feet and longer. Used to square bed sections to insure proper product and belt tracking.

Double Nose-Over - Adjustable from 0° to 35°.

Center Drive - Mounted below conveyor bed section. Can be placed most anywhere in conveyor length.

Tail Pulley - 4" diameter crowned with 1 3/16" diameter shaft for up to 30" wide belt. 6" diameter crowned with 1 7/16" diameter shaft turned down to 1 3/16" diameter on each end for 36" belt.

Drive Pulley - 8" diameter and fully lagged, 1 7/16" diameter shaft.

Snub Roller - 2 1/2" diameter at drive pulley, 2" diameter at terminal pulleys.

Return Roller - 1.9" diameter.

Take-Up - Located in center drive, provides 24" of belt take-up.

Gravity Brackets - Adjustable rod with 1 3/8" diameter pop-out transfer roller to attach wheel or 1 3/8" diameter roller conveyor.

Bearings - Sealed prelubricated with cast iron housings.

Floor Supports - Adjustable 31 1/2" to 45 1/2" from floor to top of belt. One support supplied at each end of conveyor and at nose-over, with knee braces.

Speed Reducer - C-Face mounted heavy duty worm gear reducer.

Motor - 3/4 HP 230/460-3-60 TE motor.

Belt Speed - 60 FPM constant.

Capacity - See Load Capacity Chart.

OPTIONAL EQUIPMENT

Belt - Neoprene ruff-top, PVC ruff-top, other types and styles.

Guard Rails - Adjustable channel, continuous channel, or solid steel guard rails available.

Ceiling Hangers - 1/2" diameter threaded rods 8 feet long with locking nuts and mounting hardware. Other lengths are available.

Floor Supports - Lower or higher than standard.

Lower Powered Feeder Section - Separate belt section with (2) supports, adjustable from 28 1/2" to 42 1/2". Driven by roller chain from tail pulley of inclined section. Integral feeders available.

Motor - Single phase, energy efficient, explosion proof, etc. Other HP are available.

Belt Speed - Constant and variable belt speeds available.

Electrical Controls - Magnetic starters, push button stations. Manual motor starters with overload protection, others.

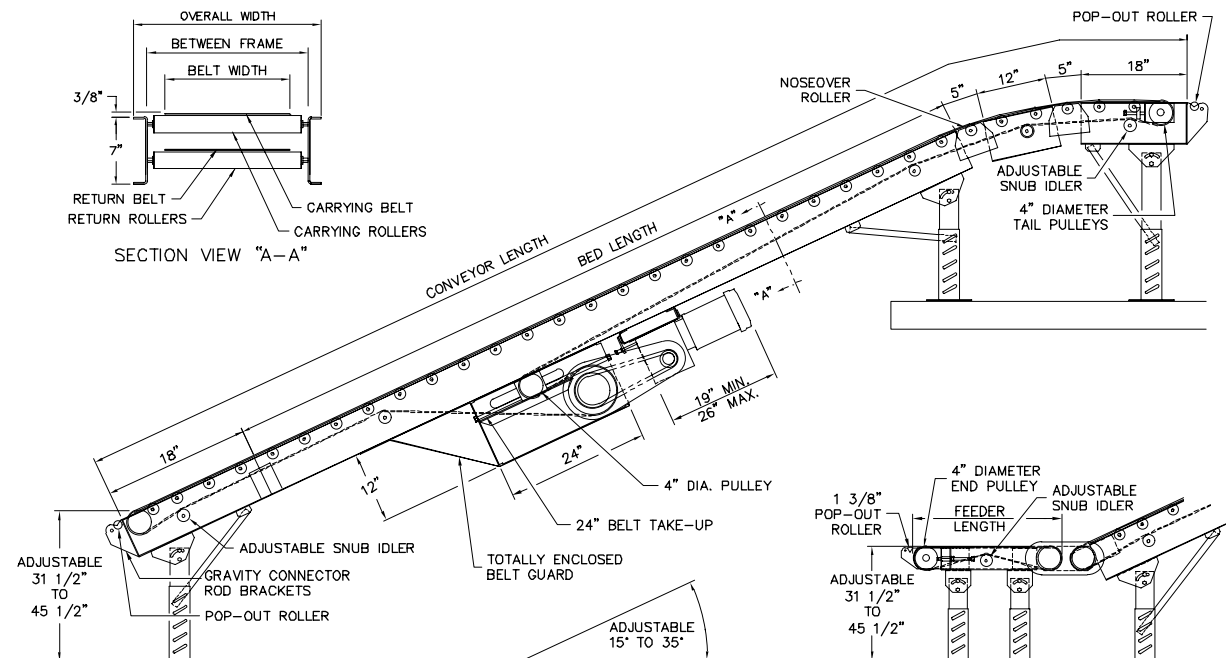
MODEL "190RBI"

Conveyor Length	Bed Length	Net Lift 25°	Horizontal Floor Space 25°	Between Frames	15"	19"	21"	23"	27"	33"
				Belt Width	12"	16"	18"	20"	24"	30"
				Overall Frame Width	18"	22"	24"	26"	30"	36"
14'10"	10'	4'8"	11'9"	Weight (lbs.)	900	1040	1120	1190	1330	1470
16'10"	12'	6'5"	15'5"		1050	1230	1305	1385	1570	1740
18'10"	14'	7'3"	17'3"		1130	1320	1410	1500	1695	1890
20'10"	16'	8'1"	19'0"		1200	1400	1510	1610	1810	2020
22'10"	18'	8'11"	20'10"		1280	1508	1615	1730	1950	2170
24'10"	20'	9'9"	22'8"		1450	1690	1800	1925	2160	2300
26'10"	22'	10'7"	24'6"		1530	1780	1910	2040	2300	2570
28'10"	24'	11'6"	26'4"		1600	1880	2010	2150	2420	2690
30'10"	26'	12'4"	28'1"		1680	1960	2112	2250	2540	2820
32'10"	28'	13'2"	29'11"		1760	2070	2220	2370	2680	2990
34'10"	30'	14'0"	31'9"		1860	2180	2340	2500	2820	3140
36'10"	32'	14'10"	33'7"		1940	2280	2450	2620	2960	3300
38'10"	34'	15'8"	35'4"		2020	2370	2550	2730	3080	3430
40'10"	36'	16'6"	37'2"		2090	2460	2650	2830	3200	3570
42'10"	38'	17'5"	39'0"		2180	2560	2760	2950	3340	3730

Load Capacity Chart

60 FPM - 25° Incline	
HP	50' OAL Max. Total Live Load
3/4	450 lbs.
1	675 lbs.
1 1/2	1125 lbs.
2	1345 lbs.

POWER FEEDER - OPTIONAL



OPTIONAL POWERED FEEDER BED