

Manual Gate Spring Balanced Gate

Skatewheel & 1³/₈" Roller

Width - 12", 15", 18" and 24"

Length - 3', 4' and 5' lengths

Wheels/Rollers - Steel or aluminum, skatewheels or rollers

Construction - 2¹/₂" x 1" channels - 12 gauge galvanized steel or .125" aluminum

Latching - Safety gate latch

1.9" and 2.0" Roller

Width - 12 widths (13" to 39" BR)*

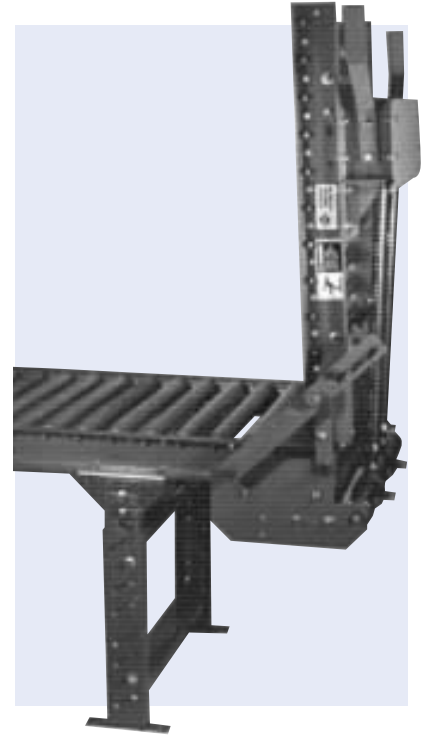
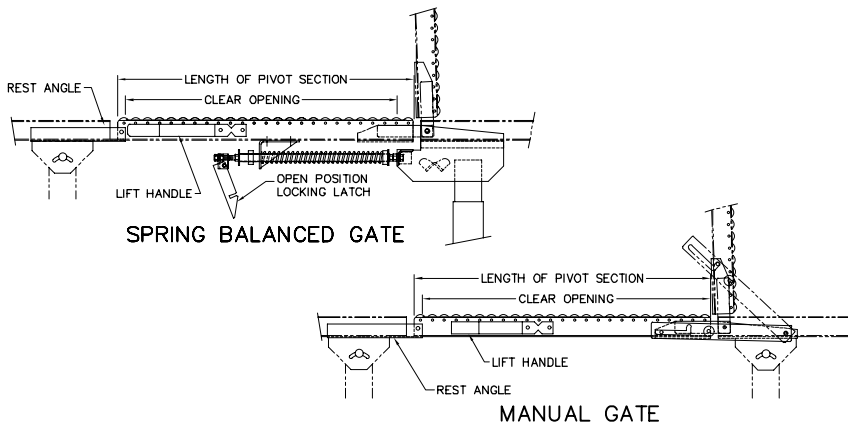
Length - 3' and 4' lengths

Rollers - 1.9" galvanized or 2.0" unplated rollers

Construction - 10 gauge painted steel channels - 3¹/₂" x 1¹/₂" (set high) or 4¹/₂" x 1¹/₂" (set low)

Latching - Safety gate latch

*NOTE: Maximum width and length determined by roller centers and type of roller. Inquire. Minimum length of spring balanced gate is 3' 0".



Multi-Poly Tier Support

Application - Use with skatewheel, 1³/₈", 1.9", 2" and most powered conveyors

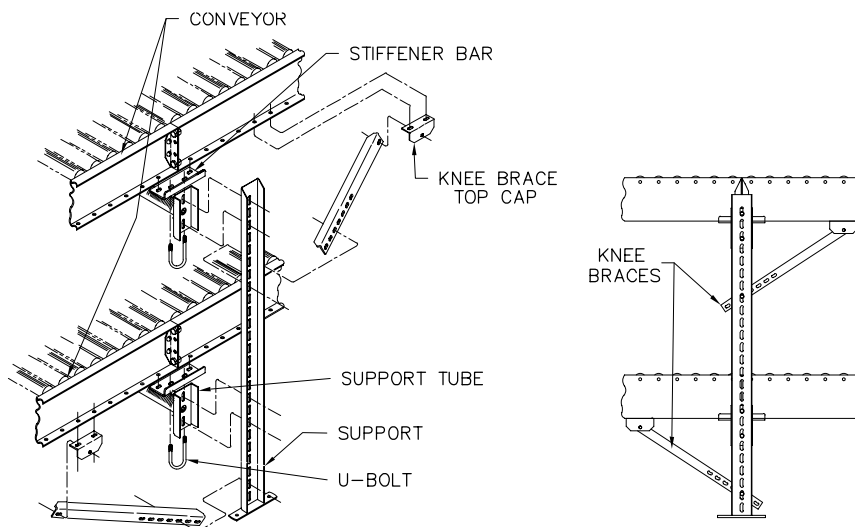
Widths - Conveyor widths to 42" wide

Capacity - 4,500 pounds capacity per set of uprights, 1,500 pounds per cross supports

Braces - Knee braces

Height - 36" to 120" support height in 6" increments

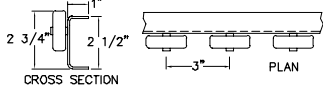
Versatility - Infinite adjustability



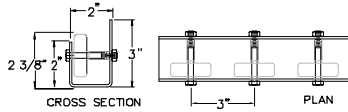
Wheel Rails

12 Gauge Galvanized Rail Steel Wheels

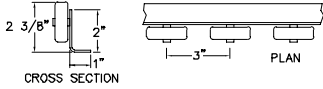
TYPE A - Rail Wt. per ft. - 2.5 lbs.



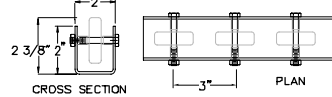
TYPE D - Rail Wt. per ft. - 3.0 lbs.



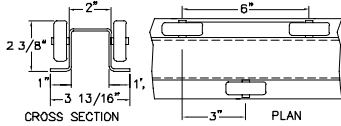
TYPE B - Rail Wt. per ft. - 2.1 lbs



TYPE E - Rail Wt. per ft. - 3.5 lbs



TYPE C - Rail Wt. per ft. - 3.5 lbs.

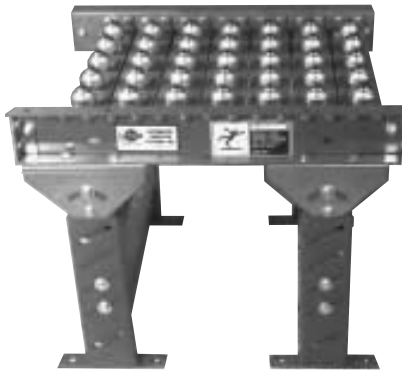


Load Capacity Chart

Support Centers	Maximum Load Per Foot (lbs.)				
	Type A	Type B	Type C	Type D	Type E
3'	260*	223	260*	260*	260*
4'	260*	92	233	260*	210
5'	146	50	125	198	113
6'	83	28	71	112	64
7'	51	17	44	69	50
8'	35	12	38	49	27
10'	18	6	15	24	14

*Wheel Capacity

Ball Transfer Tables



STANDARD SPECIFICATIONS

Frames - 3 1/2" x 1 1/2" x 10 gauge formed steel channel with formed channel ball mounting plates bolted in frame; or 2 1/2" x 1" x 12 gauge formed steel channel frame with same ball mounting plates. (Model BT). Also available in "drop-in" type (Model BTD) that replaces rollers in gravity conveyors. Bolts into existing roller axle holes for easy field mounting.

Balls - 1" diameter stud mounted.

Widths - From 13" between frames (B/F) and wider in two inch increments up to 27"; also 31", 33", 37" and 39" between frames.

Lengths - Available 1 foot to 10 feet.

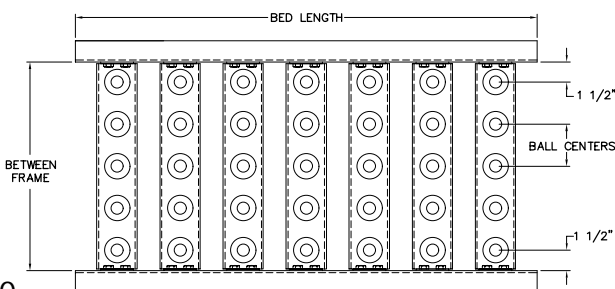
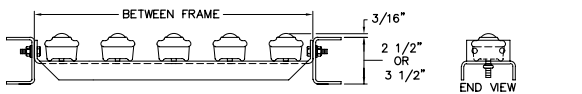
Couplings - Butt type for bolting sections together. Matches gravity conveyor.

Capacity - 50 pounds per ball transfer, 1,300 pounds maximum load with supports on 10 feet centers; 3,200 pounds maximum load with supports on 5 feet centers.

WEIGHTS

B/F Dimension	Ball Centers	Model Number	Wt. per Foot	Model Number	Weight Per Strip
13"	2"	BT-13-2	21	BTD-13-2	10
	3"	BT-13-3	12	BTD-13-3	4
	4 1/2"	BT-13-4 1/2	10	BTD-13-4 1/2	3
	6"	BT-13-6	9	BTD-13-6	2
15"	2"	BT-15-2	24	BTD-15-2	12
	3"	BT-15-3	13	BTD-15-3	4.5
	4 1/2"	BT-15-4 1/2	12	BTD-15-4 1/2	3.5
	6"	BT-15-6	10	BTD-15-6	2.5
17"	2"	BT-17-2	28	BTD-17-2	14
	3"	BT-17-3	15	BTD-17-3	5
	4 1/2"	BT-17-4 1/2	13	BTD-17-4 1/2	4
	6"	BT-17-6	11	BTD-17-6	3
19"	2"	BT-19-2	31	BTD-19-2	16
	3"	BT-19-3	16	BTD-19-3	5.5
	4 1/2"	BT-19-4 1/2	14	BTD-19-4 1/2	4.5
	6"	BT-19-6	12	BTD-19-6	3.5
21"	2"	BT-21-2	35	BTD-21-2	17
	3"	BT-21-3	18	BTD-21-3	6
	4 1/2"	BT-21-4 1/2	15	BTD-21-4 1/2	5
	6"	BT-21-6	12	BTD-21-6	4
23"	2"	BT-23-2	38	BTD-23-2	19
	3"	BT-23-3	20	BTD-23-3	6.5
	4 1/2"	BT-23-4 1/2	16	BTD-23-4 1/2	5.5
	6"	BT-23-6	13	BTD-23-6	4.5
25"	2"	BT-25-2	41	BTD-25-2	21
	3"	BT-25-3	21	BTD-25-3	7
	4 1/2"	BT-25-4 1/2	18	BTD-25-4 1/2	6
	6"	BT-25-6	14	BTD-25-6	5
27"	2"	BT-27-2	45	BTD-27-2	22
	3"	BT-27-3	23	BTD-27-3	7.5
	4 1/2"	BT-27-4 1/2	19	BTD-27-4 1/2	6.5
	6"	BT-27-6	15	BTD-27-6	5.5
31"	2"	BT-31-2	52	BTD-31-2	26
	3"	BT-31-3	26	BTD-31-3	8
	4 1/2"	BT-31-4 1/2	21	BTD-31-4 1/2	7
	6"	BT-31-6	17	BTD-31-6	6
33"	2"	BT-33-2	55	BTD-33-2	27
	3"	BT-33-3	29	BTD-33-3	8.5
	4 1/2"	BT-33-4 1/2	23	BTD-33-4 1/2	7.5
	6"	BT-33-6	19	BTD-33-6	6.5
37"	2"	BT-37-2	62	BTD-37-2	31
	3"	BT-37-3	32	BTD-37-3	9.5
	4 1/2"	BT-37-4 1/2	25	BTD-37-4 1/2	8.5
	6"	BT-37-6	21	BTD-37-6	7.5
39"	2"	BT-39-2	65	BTD-39-2	33
	3"	BT-39-3	35	BTD-39-3	11.5
	4 1/2"	BT-39-4 1/2	27	BTD-39-4 1/2	10.5
	6"	BT-39-6	23	BTD-39-6	9.5

*With balls on 2" centers, mounting strips have three(3) rows of balls.



Stationary Supports

Finish - Welded and painted H.R.S.
Height - Adjustable feet with lagging holes.
Capacity - LD, MD =1,500 lbs., 12 gauge.
 HD =3,000 lbs., 10 gauge.

HD SUPPORT							
Model Number	251SR 267SR 251CRR 267CRR 251CRRCC 267CRRCC 251CRR-3	350CRR 350SR	251CAP	251CDA 267CDA	251ACDA	Weight (lbs.)	"H" Frame Only Height
HD-1*	13 1/4"-14 1/8"	15 1/4"-16 1/8"	16 3/4"-17 1/8"	20 5/8"-21 1/2"	13 3/4"-14 5/8"	16	9"-9 7/8"
HD-2*	14 1/8"-16 1/8"	16 1/8"-18 1/8"	17 5/8"-19 5/8"	21 1/2"-23 1/2"	14 5/8"-16 5/8"	18	9 7/8"-11 1/8"
HD-3*	15 1/8"-18 1/8"	17 1/8"-20 1/8"	18 5/8"-22 3/8"	22 1/2"-26 1/4"	15 5/8"-19 3/8"	19 1/2	10 7/8"-14 5/8"
HD-4*	18 1/4"-22 1/8"	20 1/4"-24 7/8"	21 3/4"-26 3/8"	25 5/8"-30 1/4"	18 3/4"-23 3/8"	27	14"-18 5/8"
HD-5*	21 1/4"-24 1/4"	23 1/4"-26 1/4"	24 3/4"-27 3/4"	28 5/8"-31 5/8"	21 3/4"-24 3/4"	28 1/2	17"-20"
HD-6*	24 1/4"-34"	26 1/4"-36"	27 3/4"-37 1/2"	31 3/8"-41 3/8"	24 3/4"-34 1/2"	31 1/2	20"-29 3/4"
HD-7*	30 1/4"-40"	32 1/4"-42"	33 3/4"-43 1/2"	37 5/8"-47 3/8"	30 3/4"-40 1/2"	35	26"-35 3/4"
HD-8*	36 1/4"-57 3/8"	38 1/4"-59 3/8"	39 1/4"-60 7/8"	43 5/8"-64 3/4"	36 3/4"-57 1/8"	43	32"-53 1/8"
HD-9*	48 1/4"-69 3/8"	50 1/4"-71 3/8"	51 3/4"-72 7/8"	55 5/8"-76 3/4"	48 3/4"-69 1/8"	49 1/2	44"-65 1/8"
HD-10*	60 1/4"-81 3/8"	62 1/4"-83 3/8"	63 3/4"-84 7/8"	67 5/8"-88 3/4"	60 1/4"-81 1/8"	56	56"-77 1/8"
HD-11*	72 1/4"-93 3/8"	74 1/4"-95 3/8"	75 3/4"-96 7/8"	79 5/8"-100 3/4"	72 1/4"-93 1/8"	62	68"-89 1/8"
HD-12*	84 1/4"-105 3/8"	86 1/4"-107 3/8"	87 1/4"-108 7/8"	91 5/8"-112 3/4"	84 3/4"-106 5/8"	68	80"-101 1/8"



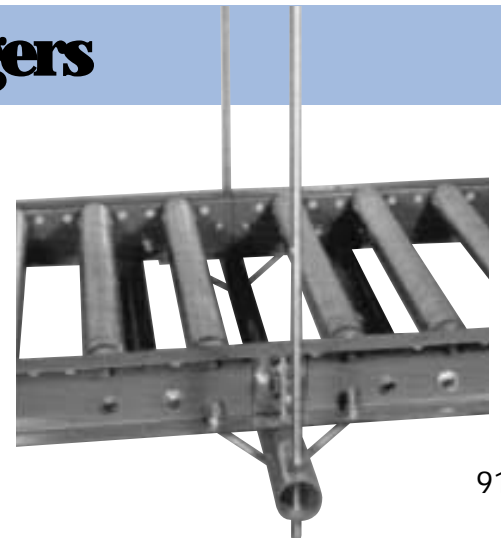
Model Number	LD SUPPORT			Model Number	LPB TSB	HPB F7C 190RBW SPC	MD SUPPORT				Weight (lbs.)	"H" Frame Only Height
	138AR 138SRH 138SR Wheel	Weight (lbs.)	"H" Frame Only Height				190GRZ 190RB 190LS 190CAP 190CLR 190CLRSS 190CLRS 190CLRSS 190RBI 190ZPA	190SRH 190SR 20SR 199SR 254SR 22CRR 22CRRCC 22CRRCS 22CRRCSS	138CAP 138CLR 138CLRS 138CLRSS SBT	Weight (lbs.)		
LD-1	10"-12 1/8"	8	7 1/4"-9 3/8"	MD-1	11 1/2"-13 3/8"	14"-16 1/8"	14 1/2"-16 3/8"	11"-13 1/8"	13"-15 1/8"	8	7 1/2"-9 3/8"	
LD-2	12"-13 1/2"	8 1/2	9 1/4"-10 1/4"	MD-2	13 1/2"-15"	16"-17 1/2"	16 1/2"-18"	13"-14 1/2"	15"-16 1/2"	8 1/2	9 1/4"-10 1/4"	
LD-3	13 1/4"-16"	11	10 1/2"-13 1/4"	MD-3	14 1/4"-17 1/2"	17 1/4"-20"	17 3/4"-20 1/2"	14 1/4"-17"	16 1/4"-19"	11	10 1/2"-13 1/4"	
LD-4	15 1/4"-21"	13 1/2	13"-18 1/4"	MD-4	17 1/4"-22 1/2"	19 3/4"-25"	20 1/4"-25 1/2"	16 1/4"-22"	18 1/4"-24"	13 1/2	13"-18 1/4"	
LD-5	19 1/4"-29"	19 1/2	17"-26 1/4"	MD-5	21 1/4"-30 1/2"	23 3/4"-33"	24 1/4"-33 1/2"	20 3/4"-30"	22 3/4"-32"	19 1/2	17"-26 1/4"	
LD-6	27"-41"	22 1/2	24 1/4"-38 1/4"	MD-6	28 1/2"-42 1/2"	31"-45"	31 1/2"-45 1/2"	28"-42"	30"-44"	22 1/2	24 1/4"-38 1/4"	
LD-7	37"-61"	24	34 1/4"-58 1/4"	MD-7	38 1/2"-62 1/2"	41"-65"	41 1/2"-65 1/2"	38"-62"	40"-64"	24	34 1/4"-58 1/4"	
LD-8*	49"-72"	26 1/2	46 1/4"-69 1/4"	MD-8*	50 1/2"-73 1/2"	53"-76"	53 1/2"-76 1/2"	50"-73"	52"-75"	26 1/2	46 1/4"-69 1/4"	
LD-9*	61"-84"	29 1/2	58 1/4"-81 1/4"	MD-9*	62 1/2"-85 1/2"	65"-88"	65 1/2"-88 1/2"	62"-85"	64"-87"	29 1/2	58 1/4"-81 1/4"	
LD-10*	73"-96"	35 1/2	70 1/4"-93 1/4"	MD-10*	74 1/2"-97 1/2"	77"-100"	77 1/2"-100 1/2"	74"-97"	76"-99"	35 1/2	70 1/4"-93 1/4"	
LD-11*	83"-106"	39 1/2	80 1/4"-103 1/4"	MD-11*	84 1/2"-107 1/2"	87"-110"	87 1/2"-110 1/2"	84"-107"	86"-109"	39 1/2	80 1/4"-103 1/4"	
LD-12*	95"-118"	42	92 1/4"-115 1/4"	MD-12*	96 1/2"-119 1/2"	99"-122"	99 1/2"-122 1/2"	96"-119"	98"-121"	42	92 1/4"-115 1/4"	

(*1) Pair knee braces included with each support.

Ceiling Hangers

Size - 1/2" diameter x 8' long threaded galvanized rods.
Sturdy - 1 1/2" diameter crosspipe mounts to underside of bed section.

Ceiling hangers provide an economical and safe means of utilizing valuable floor space when higher conveyor elevations are required. 1/2" diameter x 8' long galvanized all thread rods (with locking nuts) attach to 1 1/2" diameter standard pipe which bolts to underside of conveyor frame with pipe collars. Ceiling hangers can be used with gravity or powered conveyors. Also, guard rails are required on ceiling hung conveyors.



Tripod Supports

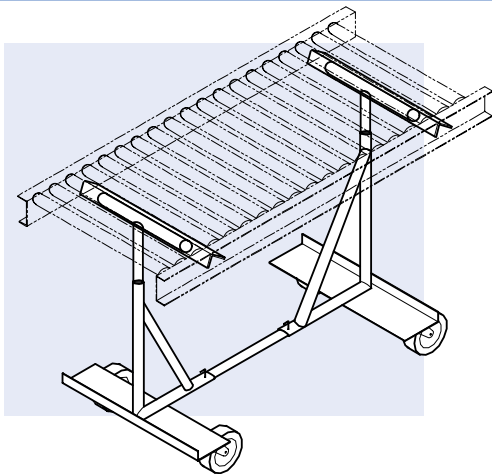


- For portable applications
- Easily adjusted with locking "L" rod
- Heavy steel pipe construction
- Capacity - 500 lbs.

Model No.	Width	Height		Weight (lbs.)	Model No.	Width	Height		Weight (lbs.)
		Min.	Max.				Min.	Max.	
T-12-18	12"	12"	18"	6	T-18-18	18"	12"	18"	8
T-12-30	12"	18"	30"	9	T-18-30	18"	18"	30"	10
T-12-40	12"	24"	40"	11	T-18-40	18"	24"	40"	12
T-12-52	12"	30"	52"	14	T-18-52	18"	30"	52"	15
T-12-72	12"	40"	72"	20	T-18-72	18"	40"	72"	21
T-15-18	15"	12"	18"	7	T-18-110	18"	60"	110"	25
T-15-30	15"	18"	30"	10	T-24-18	24"	12"	18"	9
T-15-40	15"	24"	40"	12	T-24-30	24"	18"	30"	11
T-15-52	15"	30"	52"	15	T-24-40	24"	24"	40"	13
T-15-72	15"	40"	72"	21	T-24-52	24"	30"	52"	16
T-15-110	15"	60"	110"	25	T-24-72	24"	40"	72"	22
					T-24-110	24"	60"	110"	26

Adjustable Tripod Supports are used with straight or curved sections of gravity skatewheel and 1³/₈" diameter roller conveyor only.

Portable Castered Support

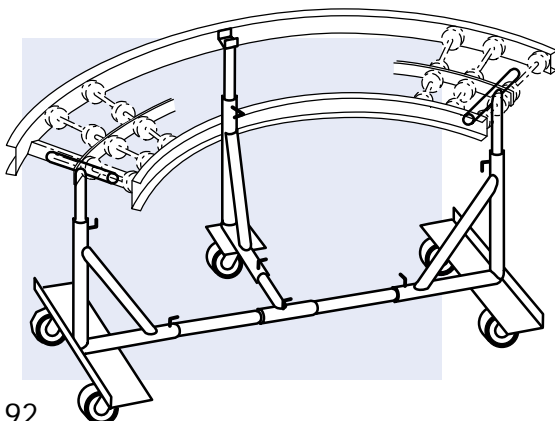


Portable Castered Support allows straight sections of gravity skatewheel or 1³/₈" diameter roller conveyor to be easily moved from one area to another. 4" diameter hard rubber swivel casters with brake.

NOTE: Floor locks optional.

12" Wide	15" Wide	18" Wide	24" Wide	Height to top of Conveyor	Weight (lbs.)
PSC-12-28	PSC-15-28	PSC-18-28	PSC-24-28	18" - 28"	53
PSC-12-40	PSC-15-40	PSC-18-40	PSC-24-40	24" - 40"	55
PSC-12-52	PSC-15-52	PSC-18-52	PSC-24-52	30" - 52"	57
PSC-12-72	PSC-15-72	PSC-18-72	PSC-24-72	40" - 72"	62

Portable Castered Curve Support



Portable Castered Curve Support allows curved sections of gravity skatewheel or 1³/₈" roller curves to be easily moved. 4" diameter hard rubber swivel casters with brake.

NOTE: Floor locks optional.

12" Wide	15" Wide	18" Wide	24" Wide	Height to top of Conveyor	Weight (lbs.)
PSCC-12-28	PSCC-15-28	PSCC-18-28	PSCC-24-28	18" - 28"	75
PSCC-12-40	PSCC-15-40	PSCC-18-40	PSCC-24-40	24" - 40"	77
PSCC-12-52	PSCC-15-52	PSCC-18-52	PSCC-24-52	30" - 52"	79
PSCC-12-72	PSCC-15-72	PSCC-18-72	PSCC-24-72	40" - 72"	84